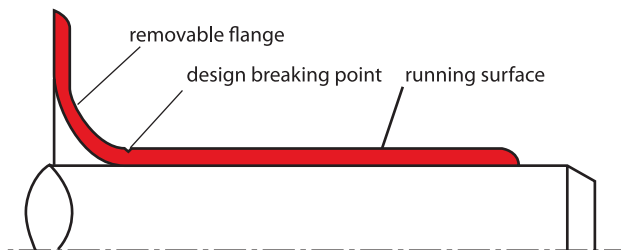


shaft repair R121

seal spec



description

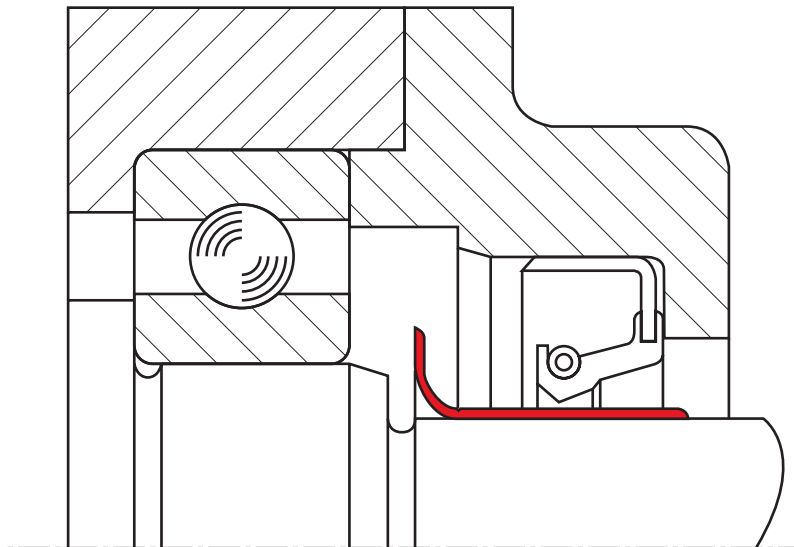
the shaft repair kit serves as a running surface for rotary shaft lip seals. it consists of a thin-walled cylindrical tube with a mounting flange. the flange has a design breaking point and can – if it is an obstacle – be removed. the shaft repair kit has a wall thickness of approx. 0.254 mm and a spiral free ground surface. it is ideally suited as a counter face for rotary shaft lip seals.

application



area of application

- repair of worn shaft surfaces
- used in new designs to save costs for surface treatment



advantages

- inexpensive replacement of worn shaft surfaces
- simple and quick installation with supplied assembly tool
- no alterations to the seal dimensions
- wear-resistant surface for long service life
- secure seating due to a force fit

technical data

material: stainless steel, AISI 304 (1.4301)
 wall thickness: 0.254 mm
 surface: ground spiral-free, ($R_a = 0.25 \dots 0.5 \mu\text{m}$)
 hardness: 95 HRB

**installation instructions**

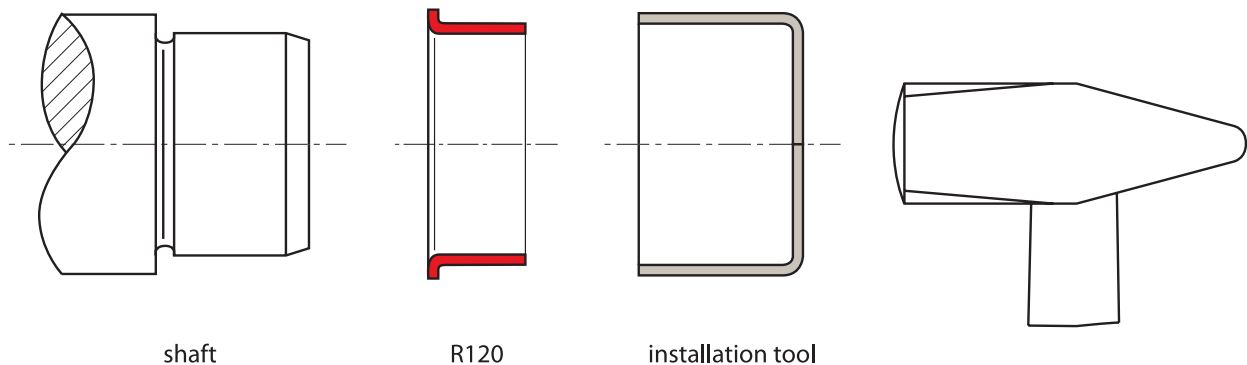
the shaft repair kit is fitted using the installation tool supplied. the raised mounting flange and the tool supplied ensure an exact fit. together they prevent tilting during installation and thus damage to the sealing surface.

observe the following points before installation:

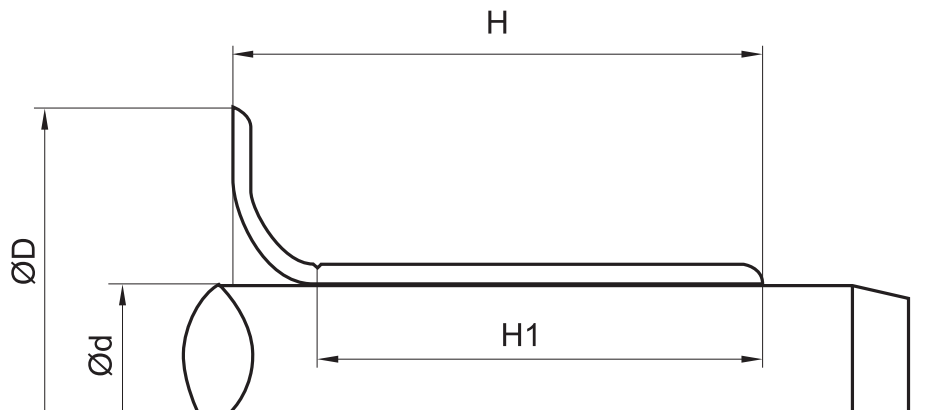
- remove dust, dirt, rust, etc. from the damaged running surface
- repair deep running scores with filling compound, e.g. metal-filled synthetic resin
- check that the shaft has a lead-in chamfer

installation sequence

- check the nominal diameter of the shaft. the oversize to the nominal dimension of the shaft must be taken into consideration
- place the shaft repair kit with the mounting flange facing forward onto the shaft.
- push on the installation tool.
- push on the shaft repair kit by striking the installation tool with a hammer or use a press.
- if necessary, cut the mounting flange using side cutters up to the design breaking point and break off the flange at the line.
- grease the shaft repair kit before fitting the seal.

**seal & housing recommendations**

please note that we are able to produce those profiles to your specific need or any non standard housing. for detail measurements, please see seal-mart catalog...



don't hesitate to contact our technical department for further information or for special requirements (temperature, speed etc.), so that suitable materials and/or designs can be recommended.